

How many Glaucoma types are there?

Although there are many types of glaucoma the most common one is Primary Open Angle Glaucoma (POAG) which affects 95% of the patients.

Most glaucomas usually do not present symptoms in the initial stages until actual permanent damage occurs with an irreversible visual field loss so it is very important to do preventive check ups.

Any other type of glaucoma could present symptoms Which may cause sudden blindness within a few days if not treated.



More information

To anticipate this disease that can concern our quality of life we must be aware and TO FIND OUT

INFORMATION + PREVENTION= HEALTH

Sites and people who can help us:

- World Health Organization
- Ministry of National Health
- Local Health Centers
- Eye care Professional: doctors, opticians, optometrists, ophthalmologists

Websites:

<http://willsglaucoma.org/spanish/education.htm>

<http://www.wgweek.net/>

Authors: Laura Brusi, Andrés Gené, Iván Noriega



Asociación Latinoamericana de Óptica y Óptica



Universidad Nacional de la Plata Facultad de Ciencias Exactas

Information and Prevention of Glaucoma



World Glaucoma week from 6 to 12 March 2011

What is glaucoma?

It is a disease which affects the eye's optic nerve and can lead to severe visual loss and even blindness if not properly treated

¿Whom does it affect?

In the 10% of the population between 40 and 60 years of age, risk increasing with age, and in people with a family history

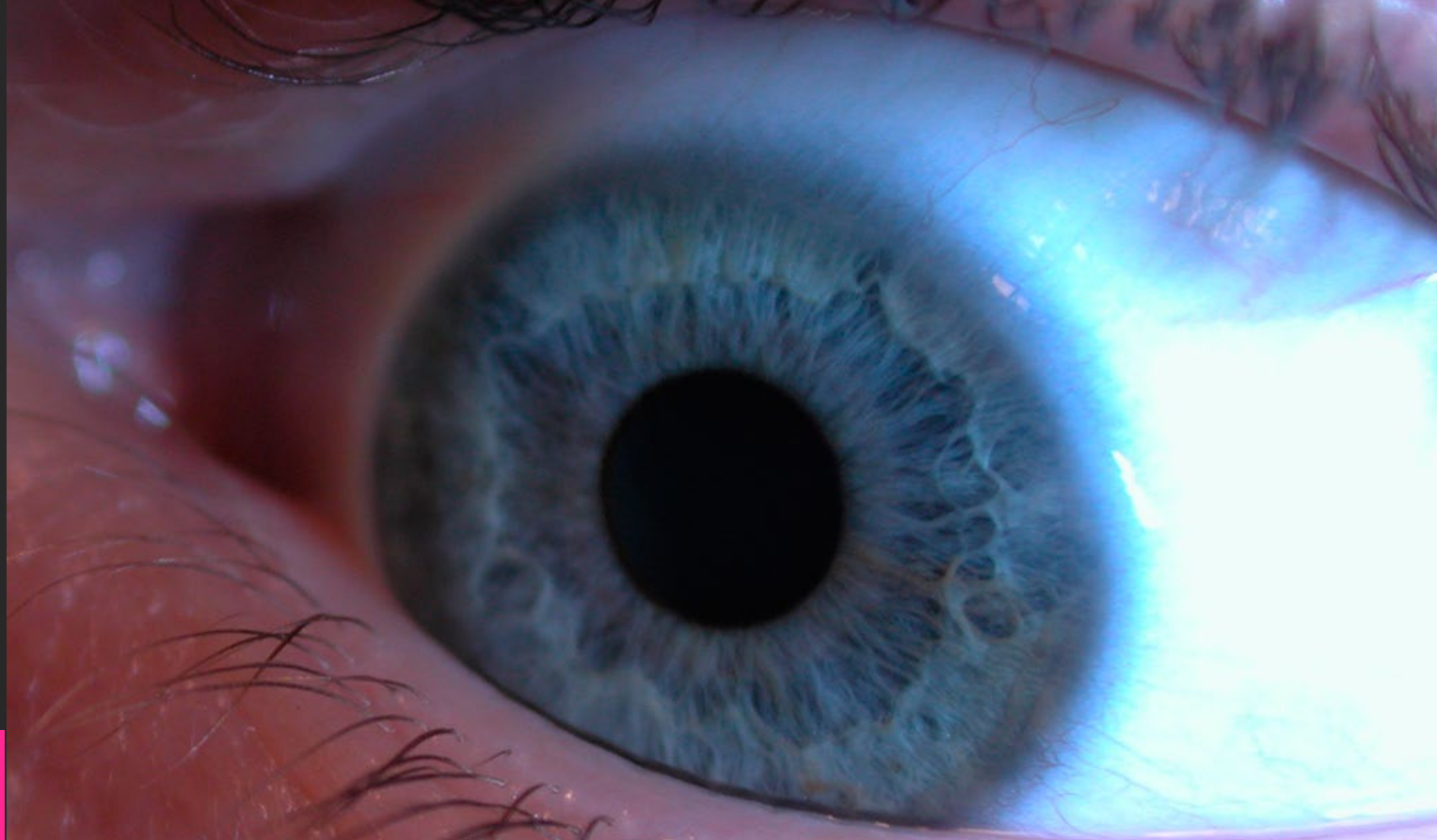
More common in men

4 times more prevalent in African patients

May be associated with systemic diseases such as:

- * Hypertension - Hypotension
- * Diabetes - vascular disorders
- * Immune Disease
- * Eye Surgery
- * Drugs such as antidepressants and anxiolytics

A person with Glaucoma should never skip the daily glaucoma eyedrops



GLAUCOMA INFORMATION AND PREVENTION

¿What are the symptoms?

In most cases the increased intraocular pressure at an early stage does not manifest apparent discomforts, the patient may not notice anything, as it advances a peripheral vision loss is noticeable, (commonly encountered as running into objects in the surroundings) and finally central vision is affected leading to blindness. Only in the acute forms of Narrow angle-closure glaucoma (NAG), which affects a small percentage of cases, there is an intense pain

¿How is it detected?

- With a routine eye examination
- With a vision screening.
- With additional tests such as fundus examination, intraocular pressure, visual fields, etc.

¿Where to seek assistance?

- The Optometrist
- The Ophthalmologist

When there is a suspected glaucoma diagnosis, the patient should be treated by an ophthalmologist. Most of the time, if the given treatment and response are adequate, the vision can be maintained and the person can continue to enjoy a normal lifestyle without ever forgetting to go to the periodic checkups with optometrist and ophthalmologist. Glaucoma itself is permanent, there is **NO CURE** for it, yet, in a majority of the cases the condition stabilizes as long as the patient is compliant with the treatments recommended by the doctor.

¿What are the treatments available?

Depending on the glaucoma type, it could be

- With medication
- With traditional surgery
- With laser surgery



The preventive checkups avoid the irreversible damage which could lead to blindness